

### CALLPOINT

A fast acting in signaling of a fire can avoid a disaster situation. The Callpoint FIREWALL-PB offers a simple and intuitive interface, performing and immediate transmission of the alert to the Fire Panel.

Designed for conventional detention fire systems, they are available in two models: Type A and Type B. Callpoint FIREWALL-PB can also be configured for intrusion or fire systems.

The Callpoint in sober red combines its mounting versatility with a simple and elegant design, differentiators and value-added in any installation.



### Advantages

- Certification EN54-11 (CPR)
- Direct activation of fire alarm
- Versatile mounting: flush or surface
- Elegant design
- Mounting interface simple and intuitive
- Ease of rearmament
- Bascule protection to prevent accidental activations
- After sale support fast and professional

### Main Characteristics

- FIREWALL PB Type A (Direct actuation)
- FIREWALL PB Type B (Indirect actuation)
- Intrusion (Direct contact)
- Fire (Loop current)
- High-brightness LED
- Rearm Key



Areas of application:



# FIREWALL PB

Superfície/Surface    Embutido/Flush



Dim: 100x100x49(mm)



Dim: 100x100x29(mm)

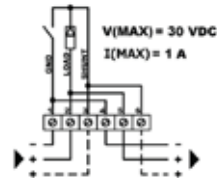


Front Type A

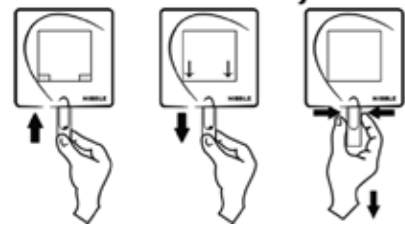


Front Type B

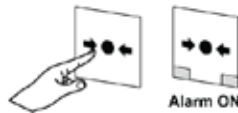
Circuito/Circuit



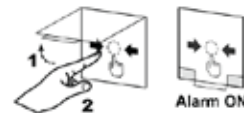
Chave Rearme/Reset Key



Tipo A/Type A



Tipo B/Type B



Perspective Type A



Perspective Type B

## Table

Maximum supply	30 VDC
Alarm voltage	5,6 V (zener diode)
Alarm current	1 A (shunt)
Dimensions	100 x 100 x 49 mm (Surface) 100 x 100 x 29 mm (Flush)



Flush lateral



Surface lateral

## Related Products



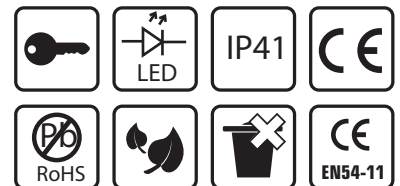
Fire Alarm Panel



Remote Indicator



Outdoor Siren alarm



CALLPOINT

**NIBBLE**<sup>®</sup>

Rua Júlio Dinis, 265, 1D  
4785-330 Trofa - Portugal  
41° 20' 14.01" -8° 33' 46.10"

(+351) 252 418 349

www.nibble.pt

info@nibble.pt